

FALL NEWSLETTER



CONCRETE CANOE

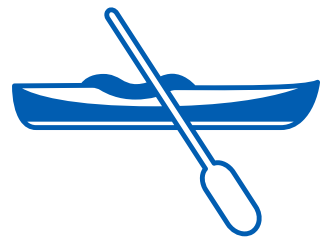
The concrete canoe team is up and running! We are happy to announce that our canoe, Orion, is on track to hit the water!



FROM LEFT TO RIGHT: SUJATA TANK, EMILY WONG, SUSAN SHIMANOVSKY, ASHLEY ALCANTARA, TINA ZHANG, NEIL BANERJEE



- Project Manager:** Susan Shimanovsky (Jr.)
- Mix Captain:** Neil Banerjee (Sr.)
- Structural Captain:** Emily Wong (Sr.)
- Jr. Project Manager:** Ashley Alcantara (Soph.)
- Jr. Mix Captain:** Tina Zhang (Soph.)
- Jr. Structural Captain:** Sujata Tank (Soph.)



This year has one of the largest underclassman representation in our Core 6 as all of our Jr. Captains are sophomores! This is the first year that our entire Jr. team is made up of women!

MIX DAY

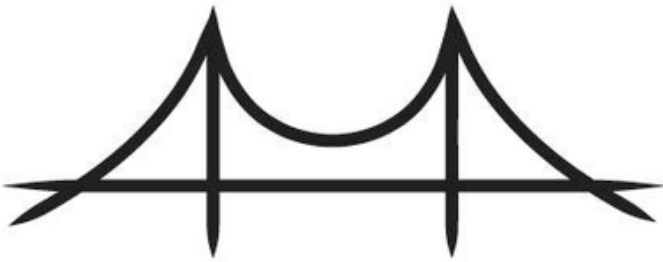


The team created our first set of cylinders to test on October 5th! We saw a great turnout from our members! We will be conducting compression testing at the 7-day, 28-day, and 56-day curing milestones.



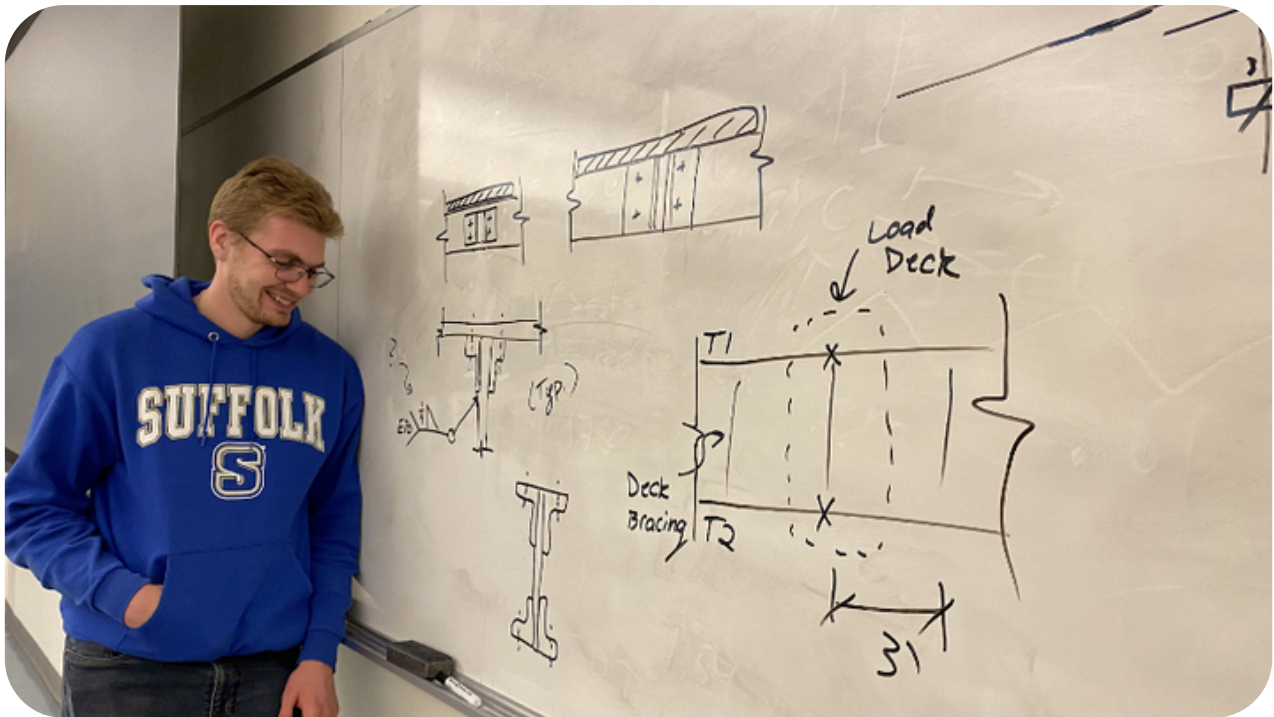
STEEL BRIDGE

The final design for our bridge is complete! We are moving onto the next stage which is figuring out unique ways to connect our bridge to build it quickly, as well as some CAD work.

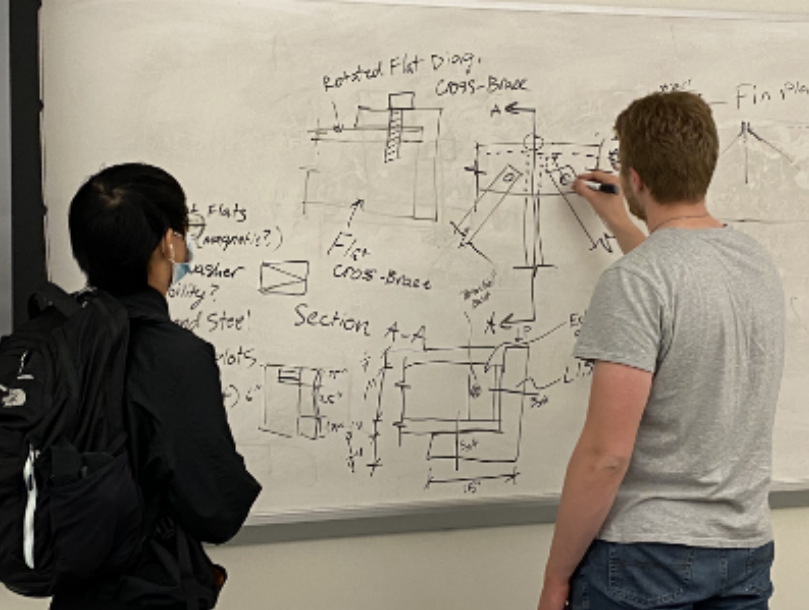


Project Manager: Gary Liu
Structural Captain: Myles Tucker
CAD Captain: Fiona Yuan
Construction Captain: Grant Frevert

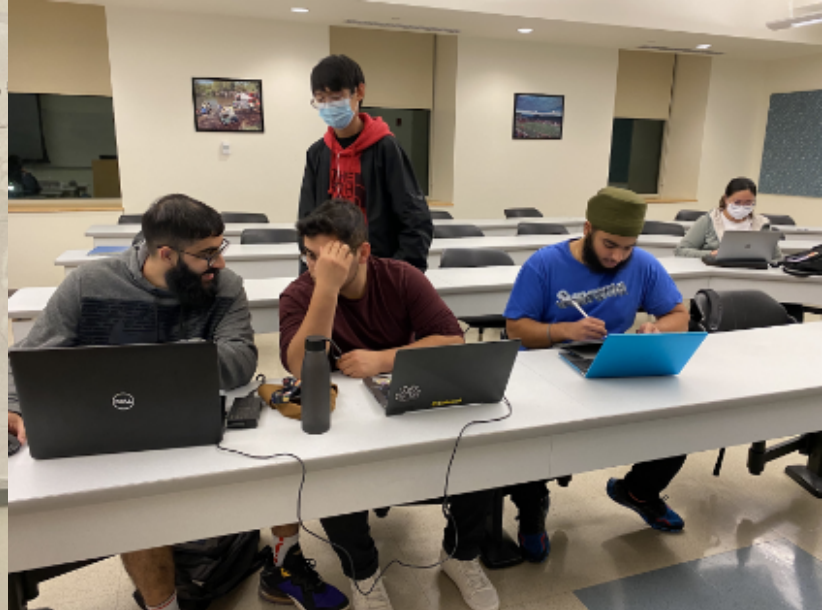
STRUCTURAL DESIGN



MYLES, THE STRUCTURAL CAPTAIN, EXPLAINING WHERE LOADS WILL BE PLACED AND THE CONNECTION TYPES



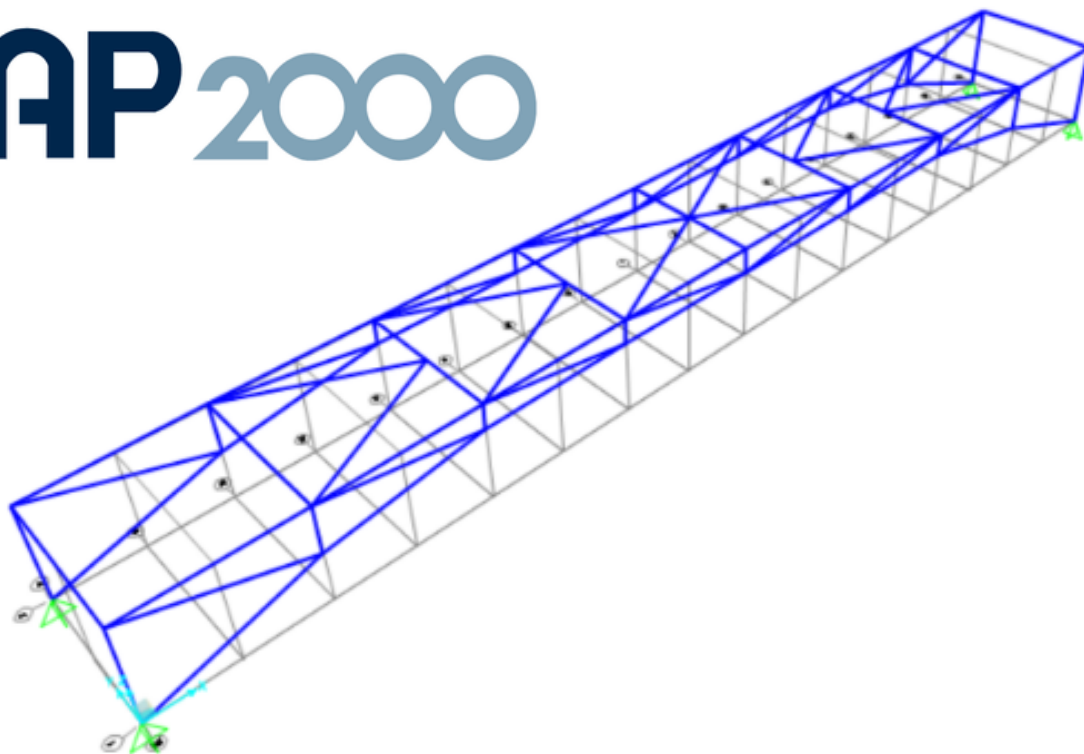
BRAINSTORMING HOW TO CONNECT OUR JOINTS PROPERLY AND LOCATION OF BOLTS FOR MAXIMUM DURABILITY



MEMBERS WORKING HARD ON SAP 2000 TO ANALYZE THE BRIDGE DESIGN

Our bridge design is complete! We are working on procuring materials so we can begin working on constructing the bridge.

SAP 2000



THE WINNING DESIGN!

FALL EVENTS

WE HAVE HAD A WIDE VARIETY OF EVENTS THIS MONTH, RANGING FROM COMPANY VISITS AND INFORMATIONAL PANELS TO ASCE JOINT JEOPARDY!



LANGAN TOUR

On 10/28, we had our first office visit of the year with Langan, a land development engineering and environmental consulting services company.

This office visit consisted of a presentation on Langan and the Hudson Yards experience, followed by a walking tour of the northern part of the Highline.

We gained a lot of insight into the company as a whole, as well as the disciplines they focus on.



MEMBERS ON A WALKING TOUR OF THE HUDSON YARDS EXPERIENCE AND HIGH LINE HOSTED BY LANGAN



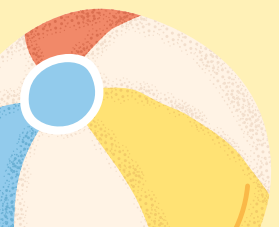
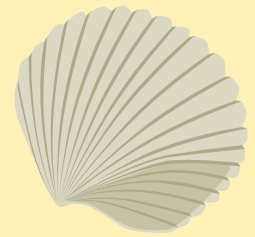
MEMBERS AFTER RECEIVING A PRESENTATION AND TOUR OF THE LANGAN NYC OFFICE

LANGAN

BEACH CLEANUP

On 10/15, we attended Coastal Stewards beach cleanup along with Stony Brook's Theta Tau and Kappa Phi Lambda to pick up litter along the Long Island Sound beaches!

Many people came bright and early to help clean the debris by the shores and do their part to help protect and preserve Long Island's marine environment.



PUMPKIN PAINTING



On 10/31, we hosted our annual ASCE Pumpkin Painting event where we painted pumpkins while watching a Halloween movie!

SUCCULENT FUNDRAISER

On 10/5, we hosted our first-ever fundraiser! We raised approximately \$150 which will go towards our concrete canoe and steel bridge competitions.



ASCE
AMERICAN SOCIETY OF CIVIL ENGINEERS
PRESENTS

PLANT FUNDRAISER

All proceeds go towards our concrete canoe and steel bridge competitions

SAC Lobby
October 5th
1 - 2:30 PM

With Mason Jar: \$8
Without Jar: \$4

Funded by the
Stony Brook University **USG**
Student Activity Fee



JOINT JEOPARDY



**MEMBERS FROM THE WINNING TEAM IN
OUR ANNUAL ASCE JOINT JEOPARDY!**

GILBANE INFO SESSION

In conjunction with SHPE, we invited Gilbane Building Co. to host an informational panel to Stony Brook University students regarding their company, student opportunities, and projects they have worked on. We had an incredible time learning about Gilbane as a company and networking with industry professionals!



**THANKS FOR
READING!**

